

Installation Guide

MX-5 Plus Rollbars

Mazda MX-5 Models: NA & NB

1	OVERVIEW.....	1
1.1	APPLICABLE MAZDA MODELS	1
2	SAFETY	2
2.1	IMPORTANT SAFETY INFORMATION	2
3	COMPONENT IDENTIFICATION.....	2
3.1	ROLLBAR – SINGLE HOOP STYLE.....	2
3.2	ROLLBAR – TT STYLE.....	2
4	HARNES MOUNTS.....	3
5	ROLLBAR INSTALLATION.....	4

1 Overview

1.1 Applicable Mazda Models

This procedure may be used to install MX-5 Plus Rollbars to the following Mazda models:

- NA
- NB

2 Safety

2.1 Important Safety Information

Operations that may cause product damage are identified by “NOTICE” labels in this publication.

MX-5 Plus cannot anticipate every possible circumstance that might involve a potential hazard. The warnings in this publication are therefore not all exhaustive. If a tool, procedure, work method or operating technique not specifically recommended by MX-5 Plus is used, you must satisfy yourself that it is safe for you and others. You should also ensure that the product would not be damaged or made unsafe by the operation or repair procedures you choose.

The information, specifications, and illustrations in this publication are on the basis of information available at the time it was written. The specifications, torques, pressures, measurements, adjustments, illustrations, and other items can change at any time. These changes can affect the service given to the product. Obtain the complete and most current information before starting any job from MX-5 Plus.

3 Component Identification

3.1 Rollbar – Single Hoop Style



Single Hoop Style Rollbar with mounts and harness points installed

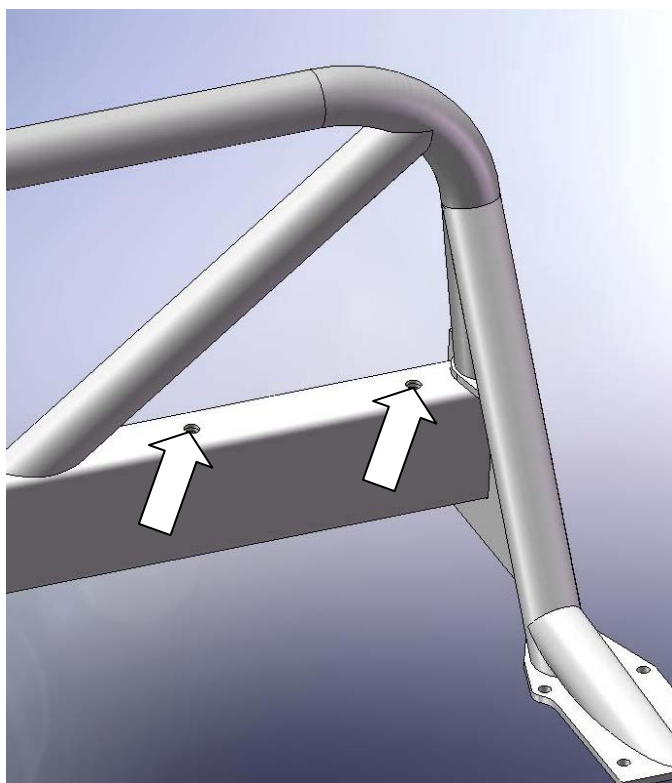
3.2 Rollbar – TT Style



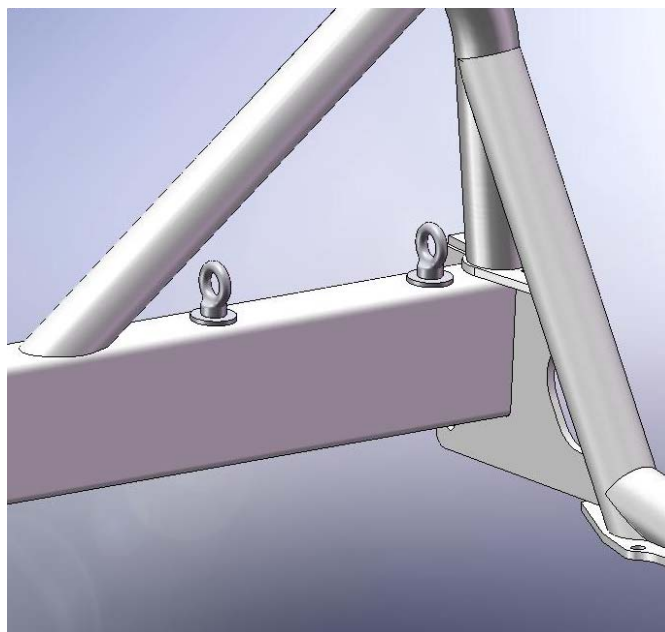
TT Style Rollbar with mounts and harness points installed

4 Harness Mounts

Both the Single Hoop and TT style rollbars can be fitted with harness mounts.



Harness mount points

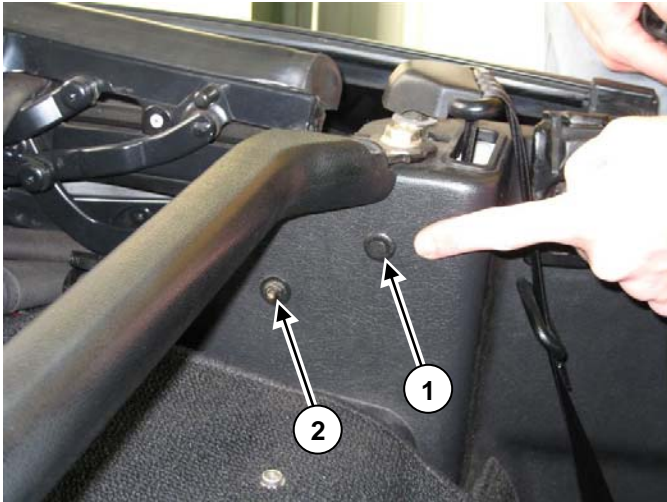


Harness mounts installed on the right side of the rollbar

5 Rollbar Installation

To install the rollbar:

1. Remove hard top (if fitted) or lower soft top cover.
2. Remove plug (1) and tonneau catch (2) from the right and left side plastic trims.



Plug (1) and tonneau catch (2) to be removed from the right and left side plastic trims



Left side plastic trim

3. If fitted, remove the cross brace (3). Continue to step 4 if cross brace is not fitted.



Cross brace (3)



Right side mounting bolt for the cross brace



Existing hole in vehicle (4) exposed after removal of the cross brace

Once the cross brace is removed continue to Step 6.

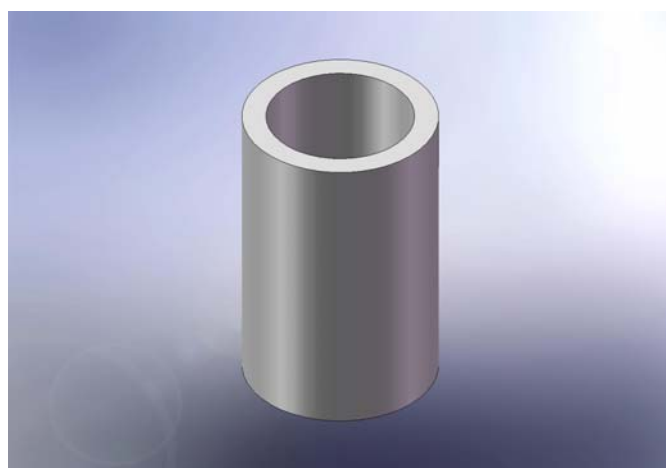


Cross brace removed from vehicle

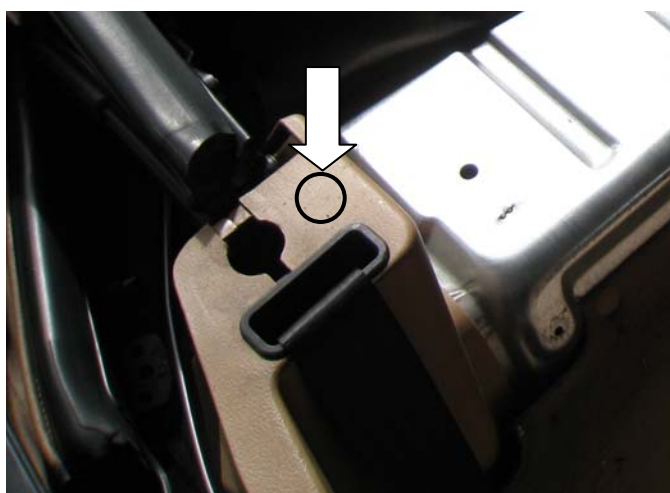
4. For vehicles not fitted with a cross brace or provision in the plastic trim for mounting the cross brace a hole will be required to be drilled in each plastic trim. Drill the plastic trim to allow the spacer (5) (supplied) to be inserted and aligned with hole (4) existing in the vehicle.



Existing hole in vehicle (4) exposed after removal of the cross brace



Spacer (5) – 2 x supplied



Approximate hole location required to be drilled in each plastic trim to accommodate spacers (5)

Note for early NA6 & some NB8 models:

With the hole in the vehicle body (4) now exposed, check to ensure that it is threaded as mounting bolts for the rollbar are required to be installed in these positions. If the hole is not threaded continue to Step 5 otherwise continue onto Step 6.

5. Insert the captive nut plate (6) from beneath the hole and align with the hole in the vehicle body (4) and sikaflex into position.
-

Note for NA6 models:

Enlarge the hole in the body of the vehicle to an M12 clearance before inserting the captive nut plate.



Captive nut plate (6) (supplied) used if the existing hole in the vehicle body is not threaded

6. Remove 1 x hard top (7) and 1 x tonneau catch (8) on each side of the vehicle.



Rubber trim (9)



Hardtop and tonneau catches

8. Remove the plastic cover to expose the upper seatbelt mounting bolt (10) on each side of the vehicle.

7. Loosen two screws on the door sill panel and pull the door rubber (9) from the vehicle. Repeat for the other side.



Pull off the plastic cover to expose the upper seatbelt mounting bolt



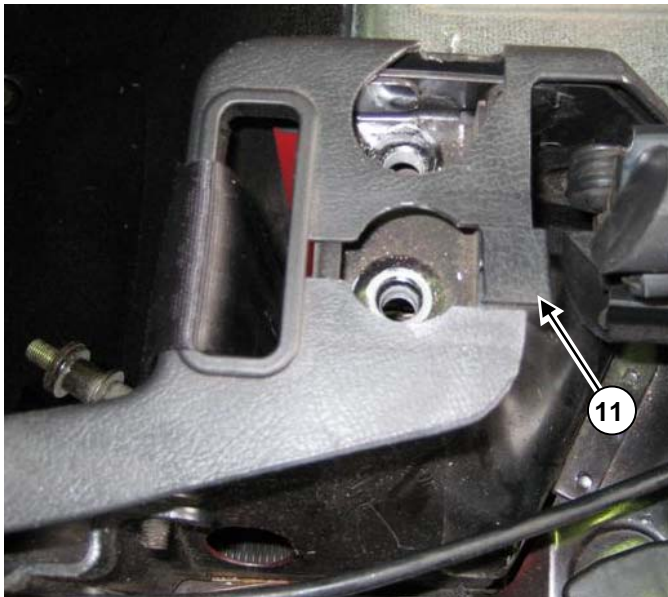
Upper seatbelt mounting bolt (10)



Left side upper seatbelt mounting bolt (10) removed

9. Remove the upper seatbelt mounting bolt (10) on both sides of the vehicle.

10. Remove clips (11) from adjacent to the upper seatbelt mounting bolts and store.



11. Remove the carpet trim.



Carpet trim removed from the vehicle



Remove the carpet trim by removing the 5 screws at the front of the carpet

12. Remove the right and left side plastic trims from the vehicle and set aside.



Left side plastic trim being removed from the vehicle

When removing plastic trims from the vehicle check to ensure that the fastening clips (12) remain with the plastic trims. If the fastening clips are not on the plastic trims remove from the vehicle body and replace back to the plastic trim.



13. Install spacers (5) as indentified in Step 4.

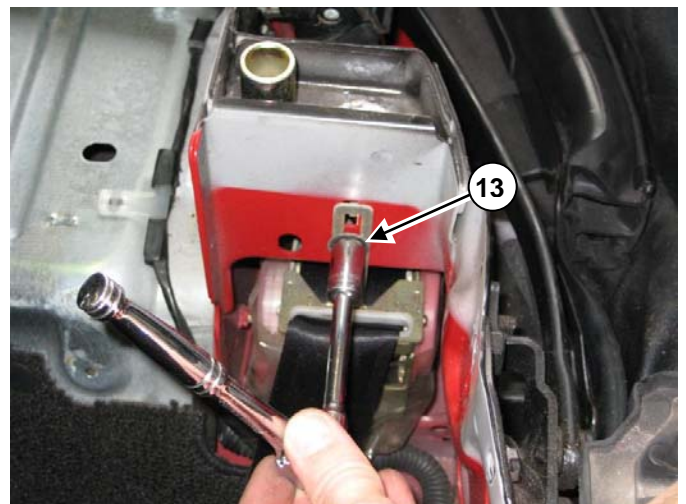


Spacer installed in the vehicle (plastic trim shown)

14. Remove bolts (13) & (14) and remove the seatbelt coil from the housing in the vehicle. Repeat for the other side.

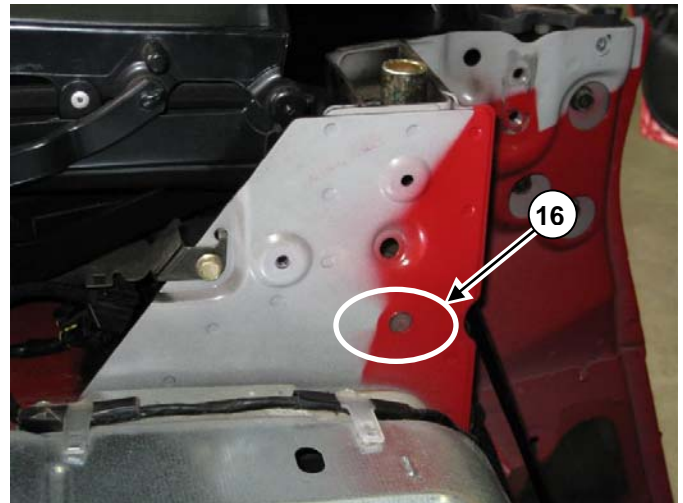


Fastening clip for the plastic trim





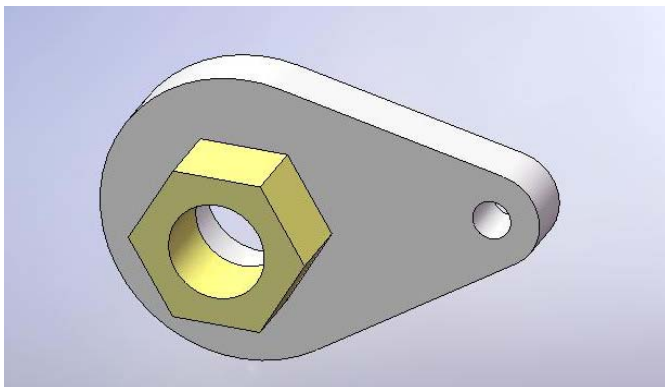
Seatbelt coil removed from housing



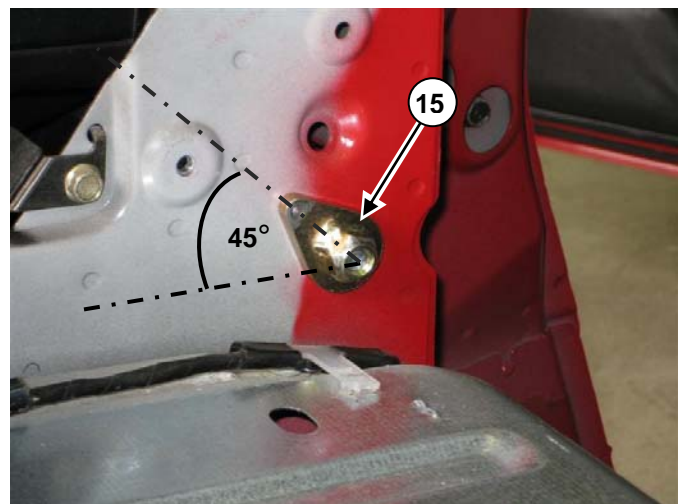
15. Position the mounting plate (15) on the body of the vehicle with the larger hole in the mounting plate coincident with hole (16). Insert a bolt (supplied with the rollbar) through the cavity left by removal of the seatbelt coil and through the hole in the body of the vehicle (16) then into the mounting plate (15). Before hand tightening, ensure that the mounting plate is angled approximately 45 degrees from the rear parcel shelf of the vehicle.



Mounting plate bolted to the body of the vehicle

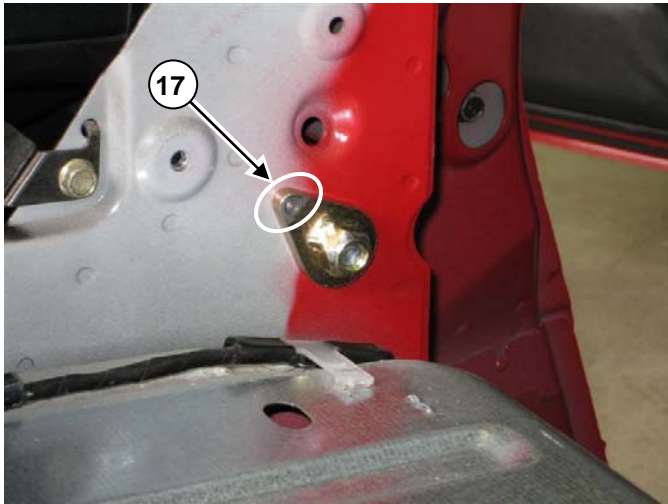


Mounting plate (15)



Mounting plate (15) positioned on the body of the vehicle with the bolt installed

16. With the mounting plate installed on the body drill a Ø5 mm hole through the body of the vehicle using the smaller hole (17) on the mounting plate as a guide.



Drill a 5 mm hole in the body using the smaller hole in the mounting plate (17) as a guide

17. Remove the bolt and release the mounting plate (15) from the body of the vehicle.

18. Insert the mounting plate through the cavity left by removal of the seatbelt coil and align the larger hole to the existing hole in the body with the nut facing towards the outside of the vehicle.

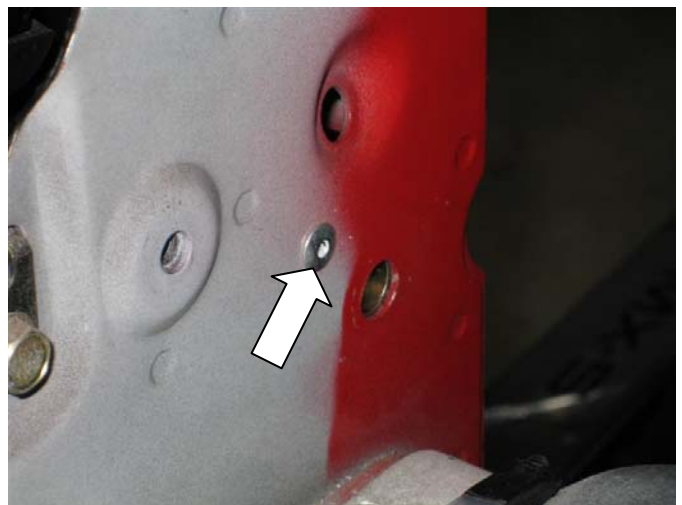
19. Insert the same bolt used in Step 15 through the body and into the thread on the mounting plate and hand tighten.

20. Rotate the mounting plate so that the smaller hole is aligned with the hole drilled in the body in Step 16.

21. With the hole in the body (16) and the smaller hole in the mounting plate (17) aligned insert the supplied rivet through the body and into the hole of the mounting plate. Once installed properly the mounting plate will be clamped to the body of the vehicle.



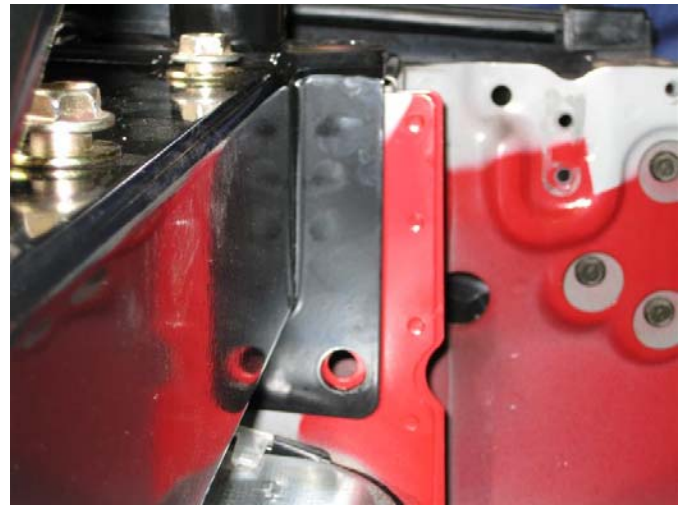
Rivet the mounting plates (15) into position



Mounting plate (15) now held in position by the rivet



View inside the seatbelt cavity showing the mounting plate riveted to the body



Check the alignment of holes

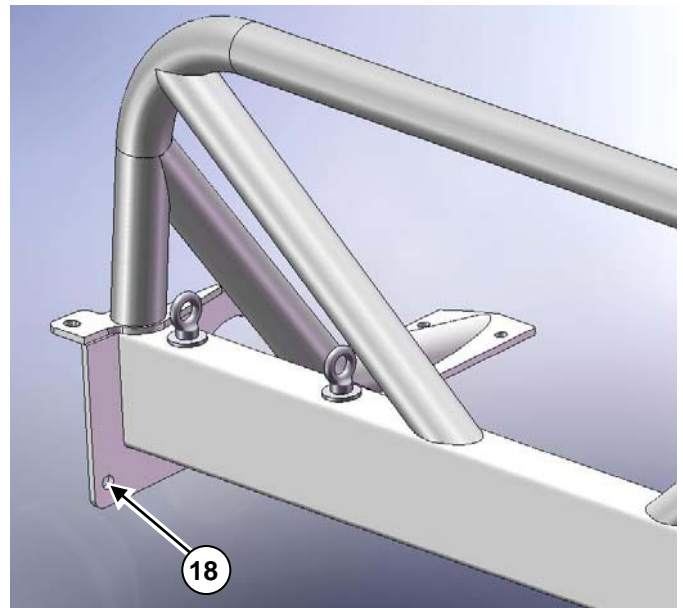
22. Remove the bolt from each mounting plate (15) and store.
23. Repeat Steps 15 to 22 for the other side of the vehicle.
24. Remove mounting plates and bolts from the rollbar and position at the rear of the vehicle.



25. Position the rollbar into the vehicle once again without the plastic trims in position and align the hole in the rollbar (18) with the hole (16) in the body of the vehicle.

NOTICE

Hole (16) in the body of the vehicle **MUST NOT BE MODIFIED** for installation of the rollbar. Spacers (5) are cut to suit variations in each vehicle. Refer to Step 28 for further details.



Hole (18) on the rollbar to align with hole (16) in the body of the vehicle

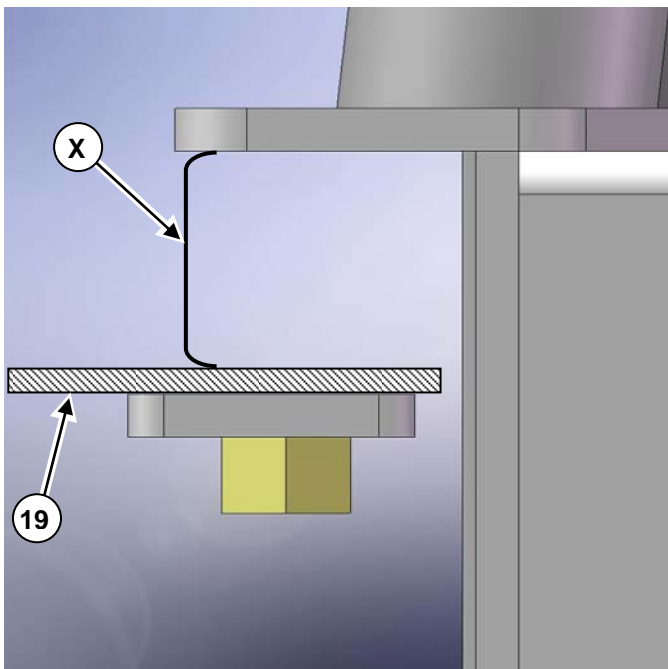
26. Insert a bolt through the aligned holes (16) & (18) and hand tighten. DO NOT tighten these bolts at this stage.

27. Check to ensure that the foot pads on the rollbar are coincident with the rear parcel shelf of the vehicle. If not coincident rotate the rollbar around the two bolts until the foot pads of the rollbar are sitting on the parcel shelf.



Foot pad aligned with the rear parcel shelf

28. With only two bolts installed and the foot pads of the rollbar sitting on the rear parcel shelf measure the distance X from the body of the vehicle (19) to the bottom of the rollbar. Repeat for the other side.



Measure the distance X – from the body (19) to the bottom of then rollbar when installed in the vehicle

29. If required cut one spacer to each dimension X obtained in the previous step and mark left and right if different lengths are obtained.

30. Remove the rollbar from the vehicle.

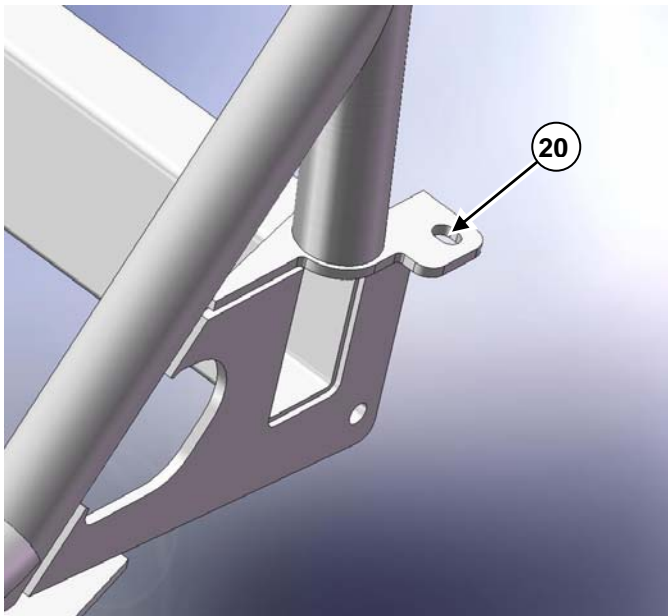
31. Install spacers (5) cut to length taking note of markings added in Step 29.

32. Reinstall plastic trims to the vehicle.

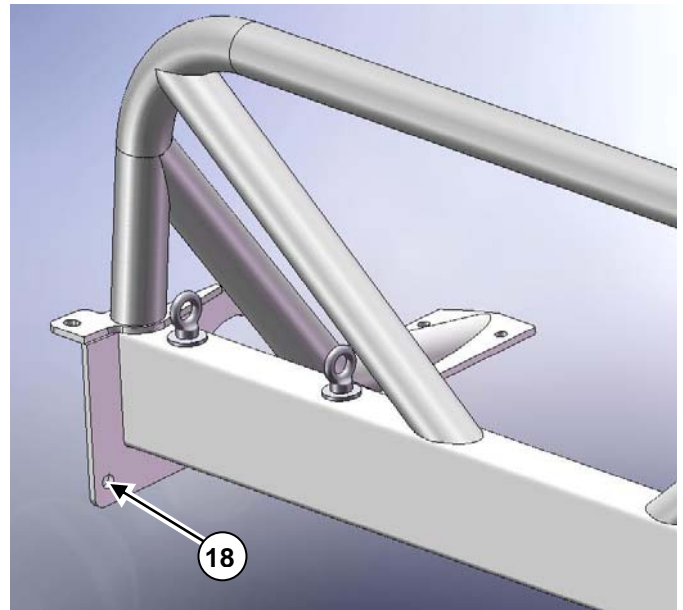
33. Place the rollbar into the vehicle and position so that the slot (20) on the roll bar lines up with the hole for the spacer (5) on each side of the vehicle.



Rollbar positioned in the vehicle



Slot (20) on each side of the rollbar to coincide with spacers (5) when positioned in the vehicle

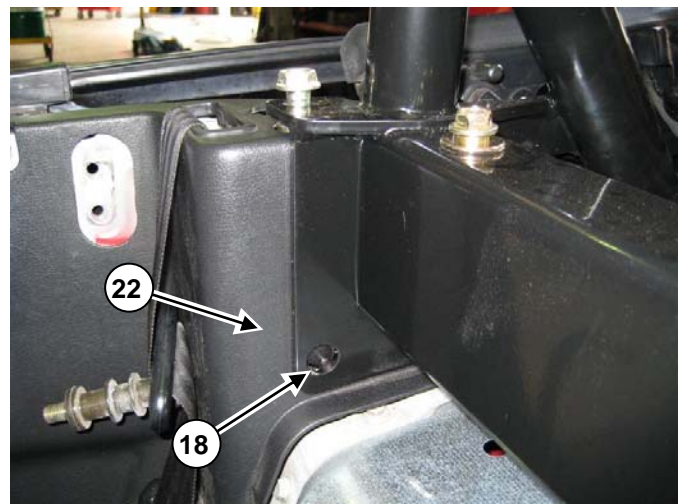


Hole (18) on the rollbar used to mark the hole required to be cut in each plastic trim

34. Insert 1 x bolt (21) (supplied with the rollbar or reuse existing) into each end of the rollbar and hand tighten.



Bolt (21) installed in the right side of the rollbar



Rollbar hole (18) used to mark the hole required to be drilled in the plastic trim (22)

35. With the rollbar positioned in the vehicle use the hole (18) in the rollbar to mark the hole required to be cut in the plastic trim (22). Repeat for the other plastic trim.



Mark the plastic trim

36. Remove 1 x bolt (21) from each end of the rollbar.



Remove bolt (21) from each end of the rollbar

37. Remove the rollbar from the vehicle.



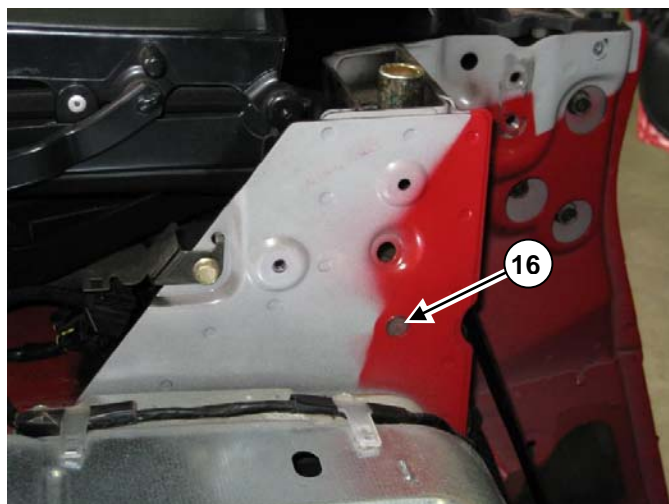
38. With the rollbar removed the plastic trims (22) are required to be removed for drilling.

39. Locate the hole marked in Step 34 on each plastic trim and drill a hole through the plastic to a size of the marking.



Drill each plastic trim

40. Reinstall plastic trims to the vehicle. Visually inspect that the hole drilled in the plastic trim coincides with the existing hole located in the body of the vehicle (16).

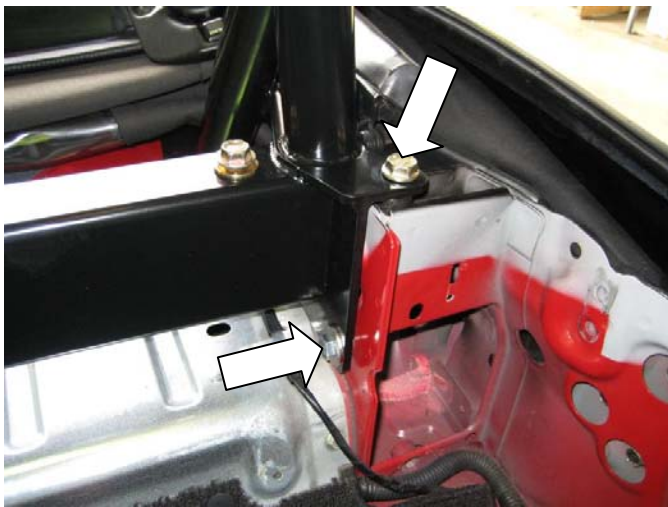


Existing hole (16) in the left side of the body (plastic trim not shown)

NOTICE

Hole (16) in the body of the vehicle **MUST NOT BE MODIFIED** for installation of the rollbar. Spacers (5) are cut to suit variations in each vehicle. Refer to Step 28 for further details.

41. Remove plastic trims from vehicle and enlarge hole if required for correct alignment.
42. Reinstall the rollbar aligning all four mounting locations. Once aligned insert and hand tighten mounting hardware (supplied with the rollbar).



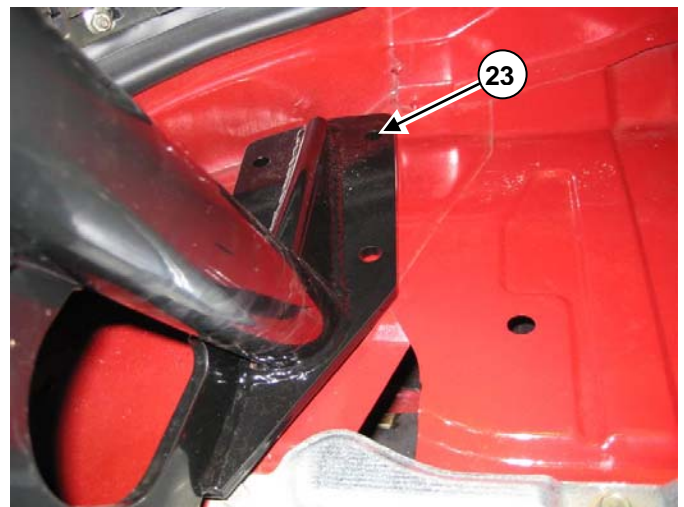
Rollbar mounting hardware installed in two places on the left side of the vehicle (plastic trim not shown)



Rollbar mounting hardware installed in two places on the right side of the vehicle (plastic trim not shown)

43. Clear items from the boot of the vehicle to allow holes to be drilled in the rear parcel shelf.
44. With the rollbar installed in the vehicle use the four holes in each foot pad of the rollbar as a guide to drill holes through the parcel shelf of the vehicle. Repeat for the other side drilling a total of 8 holes using the rollbar as a template.

Hole 23 in the rollbar lines up with an existing hole in the parcel shelf. Drill to Ø12 mm.



Rollbar holes to be used as a template to drill holes in the parcel shelf of the vehicle



Drill holes in the rear parcel shelf using the rollbar holes as a template

45. Remove rollbar from the vehicle.

46. Grind holes drilled in the parcel shelf smooth and remove all debris from inside the vehicle and the boot.



Grind holes smooth

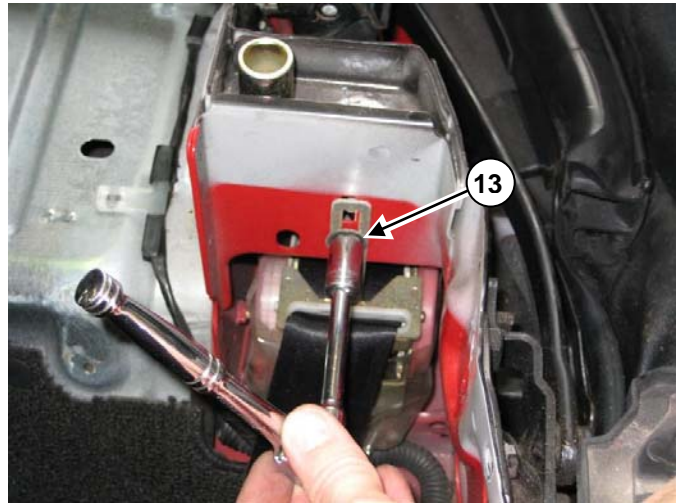


Remove debris

47. Return seatbelt coils to their housings, insert and tighten mounting hardware (13) & (14).



Return seatbelt coils to their housings



48. Insert the seatbelt through the plastic trim and re-fit the trim to the vehicle. Repeat for the other side.



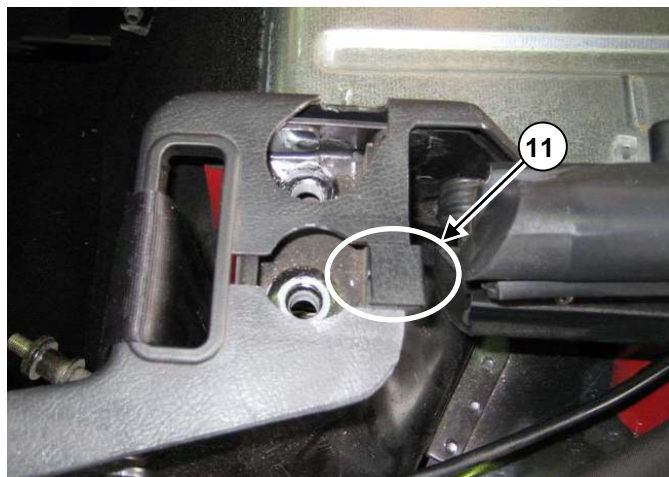
Insert the seatbelt through the plastic trim on final installation

49. Push rubber door seals back into position and install and tighten door sill screws which were loosened or removed in Step 7.



Install and tighten screws from door sill

50. Install plastic trim clips removed in Step 10.



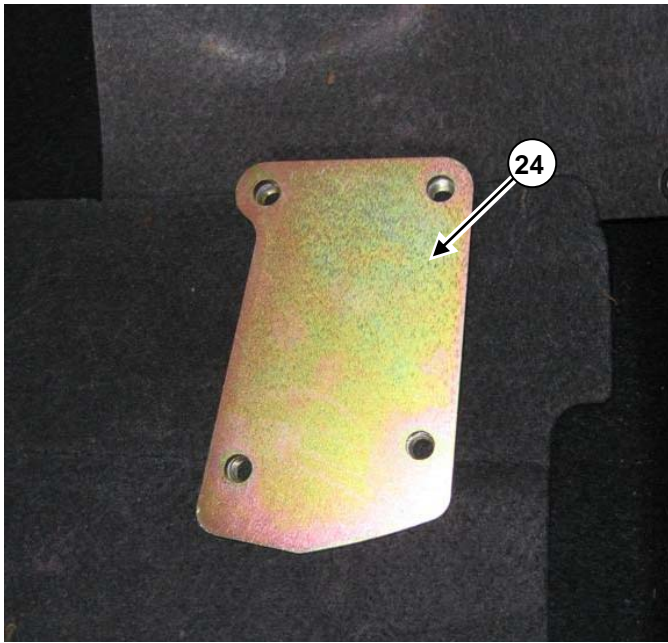
Plastic trim clip (11)

51. Position the rollbar in the vehicle and install four bolts to the front of the rollbar.



Two bolts installed on the left side of the rollbar

52. Access the boot of the vehicle and orientate the mounting plate (24) so that the nuts are facing down. Hold to the underside of the parcel shelf and align to the four holes drilled in Step 43. When aligned install and tighten four bolts from inside the vehicle. Repeat for the other side.



Right side mounting plate (24) orientated for bolting



Mounting plate with four bolts installed

53. Reinstall the upper seatbelt mounting bolt on each side of the vehicle refitting the plastic covers.



Insert bolts from inside the vehicle whilst the mounting plate is being held in position via the boot



Reinstall the upper seatbelt mounting bolt (10)



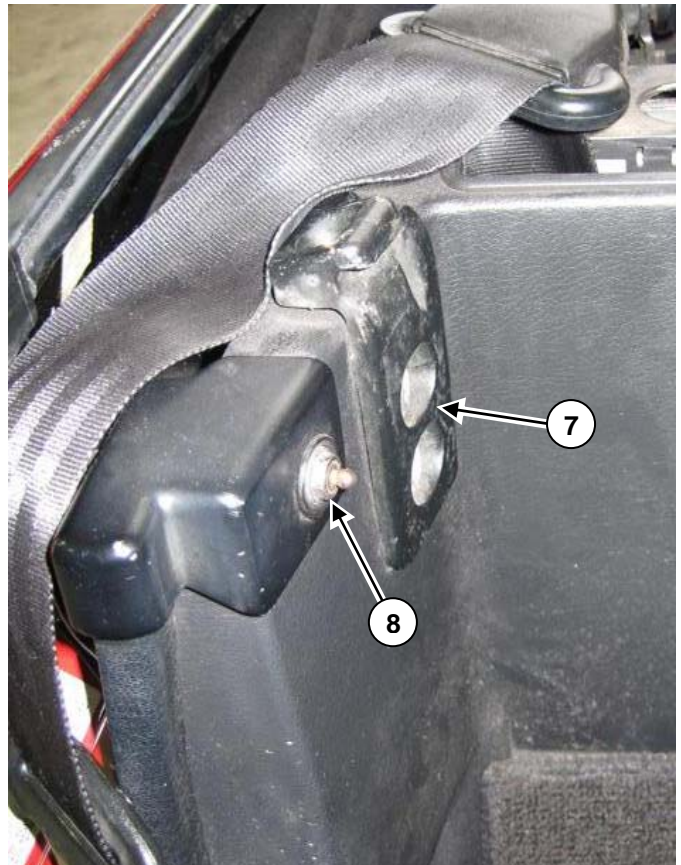
Upper seatbelt mounting bolt (10) installed and the plastic cover fitted

54. Reinstall the parcel shelf carpet.



Reinstall carpet

55. Reinstall 1 x hard top catch (7) and 1 x tonneau catch (8) on each side of the vehicle.



Reinstall 2 x catches on each side of the vehicle

56. This completes the installation of the MX-5 Plus rollbar into your vehicle.



MX-5 Plus rollbar installed